

# Year 1/2 Plants Knowledge Organiser



## What do I know ?



- I can identify and name a variety of common wild and garden plants, including deciduous and evergreen trees. (Y1)
- I can identify and describe the basic structure of a variety of common flowering plants, including trees. (Y1)

Key vocabulary

Picture

Meaning

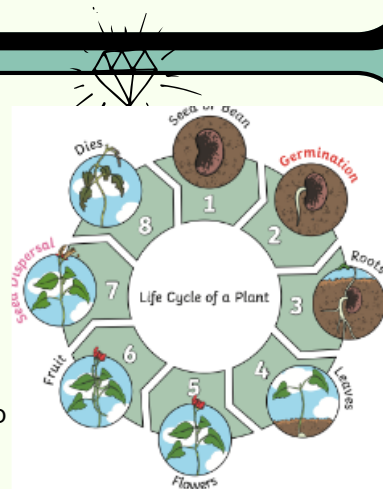
Growth



A plant growing upwards.

## Gems of knowledge

- I will explain how seeds and bulbs grow into plants.
- I will learn about the life cycle of a plant.
- I will identify the conditions that a plant needs to grow and stay healthy.

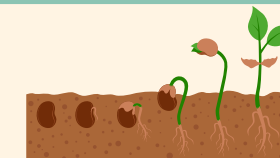


Healthy



In a good condition.

Germinate



Where a seed becomes a seedling.

Seedling



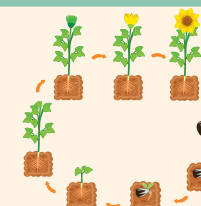
A young plant.

## How will I work like a Scientist?



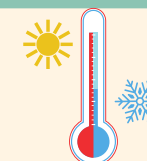
- I will ask simple questions.
- I will suggest ways of answering a question (Y1- with support).
- I will observe using equipment.
- I will perform a simple test.
- I will take measurements (Y1- using non-standard units).
- I will identify and classify (Y1- with guidance).
- I will gather and record data (Y1- with support).
- I will record my findings in a range of ways (Y2 only).
- I will suggest answers to simple questions.

Life cycle



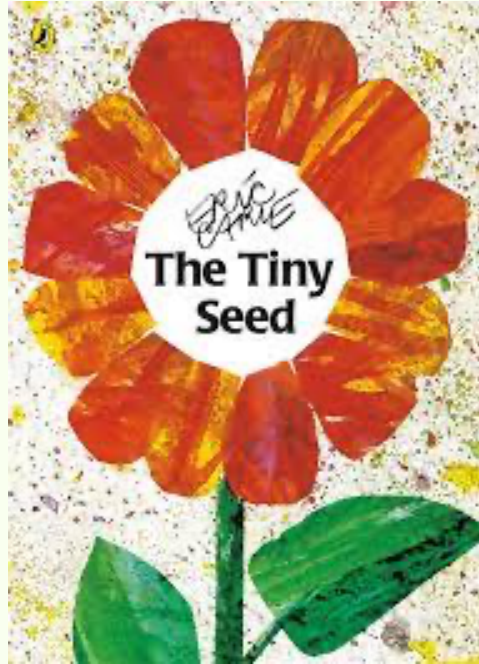
The series of changes in the life of a living thing.

Temperature

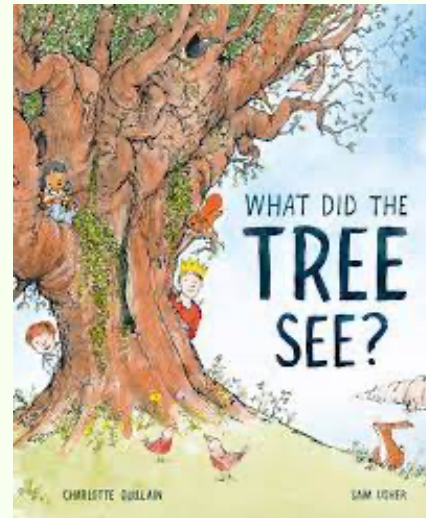


How hot or cold it is.

# Read me!



The Tiny  
Seed by Eric  
Carle.



What did the tree see?  
by Charlotte Guillain.

Both available to listen to on YouTube.