

Year 5/6 Electricity Knowledge Organiser



What do I know ?



- I can name common appliances that run on electricity. (Y4)
- I know that some appliances use mains electricity, some use batteries and some use both. (Y4)
- I can construct a simple circuit including cells, wires, bulbs, switches and buzzers. (Y4)
- I can identify a complete and incomplete circuit. (Y4)
- I know that a switch can open and close a circuit. (Y4)
- I can name some conductors and insulators. I know metal is a good conductor. (Y4)

Gems of knowledge



- I will investigate how to increase the brightness of a bulb or the volume of a buzzer.
- I will construct a simple series circuit.
- I will use a switch to turn a circuit on or off.
- I will use circuit symbols to draw simple circuit diagrams.

How will I work like a Scientist?



Plan different types of scientific enquiries to answer a variety of scientific questions.

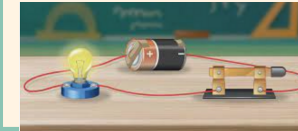
Recognise and control variables where necessary (Y5- with support).

Key vocabulary

Picture

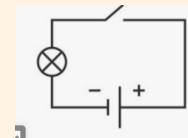
Meaning

Circuit



A complete path that an electrical current can flow around.

Circuit diagram



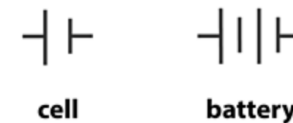
Scientific drawing of a circuit using symbols.

Component



A part of an electrical circuit.

Cell/battery



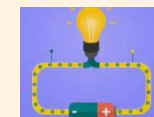
A device that stores energy until it is needed. A cell is single unit. A battery is a collection of cells.

Voltage



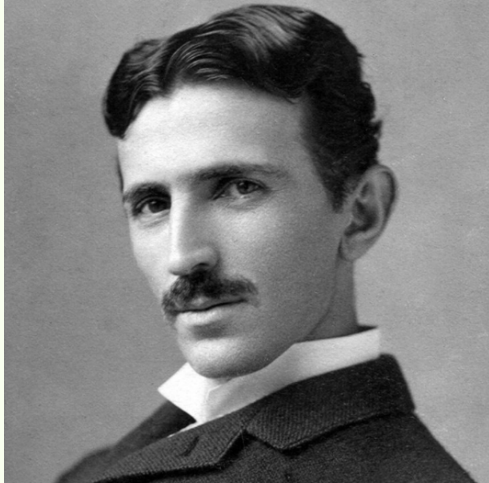
The force that makes the electric current move through the wires

Current



The flow of electric charge in a circuit.

Significant Scientist



Nikola Tesla was a successful inventor and engineer. He is best known for his part in the design of the modern alternating current (AC) electricity supply system. Tesla Motors was named after him.

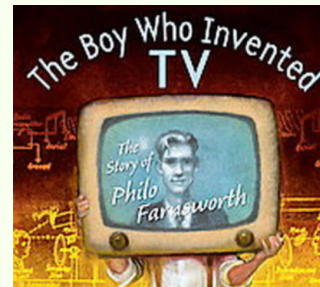


Careers in Physics (Electricity)



A **electrical engineer** fixes and designs new and better ways of using devices that use electricity.

Read me!



The Boy Who Invented TV by Kathleen Krull and Greg Couch

The Lighthouse Keeper's Lunch by Ronda and David Armitage.

