

MUSIC- Y1 Cycle A- Spring 2

Musical Genre: Bossa Nova/ Latin

What will I be able to do?

- Find the pulse.
- Copy & clap back rhythms. Like the rhythm of your name and favourite animal on Charanga.
- Sing & dance to the music.
- Play instruments using up to 3 notes- D, or D, F, C & D.
- Improvise using notes D & E.
- Take part in a class performance of Round & Round.
- Introduce your performance to your audience.
- Reflect on your performance- how did it make you feel?

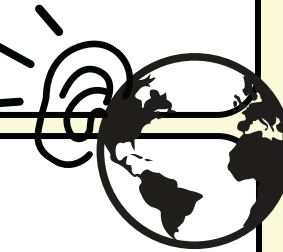
Writer/Composer:

Joanna Mangona



What's it all about?

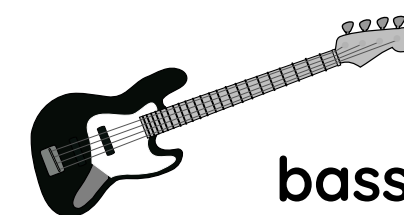
A song all about our dimensions of music- like pulse!



Other songs from this genre/similar genre:

- Livin' La Vida Loca by Ricky Martin
- It Had Better Be Tonight (Meglio Stasera) by Michael Bublé

Instruments in the song:



bass



guitar



drums



singers



saxophone



trumpet



percussion

Genre gems of knowledge:

- Latin Bossa Nova is a style of Brazilian music.
- Invented in the late 1950's.

Where we live. The UK



Brazil

Vocabulary:

percussion



Instruments that create sound when they are hit, shaken or rubbed/scraped.

improvise

PLAY

Improvisation is making up your own tunes on the spot.

compose



Composing is like writing a story with music.

audience



People who watch or listen to you sing or perform.

What do you like about it?

What can you hear?

Listen & Appraise

MUSIC- THE INTER-RELATED DIMENSIONS OF MUSIC

The building blocks of music. Listen & appraise, compose and improvise using these!



Pitch

High & low sounds



Rhythm

Long & short sounds or patterns that happen over the pulse.



Pulse

The regular heartbeat of the music.

Notes =same length.
Like a ticking clock or a heartbeat.



Notation

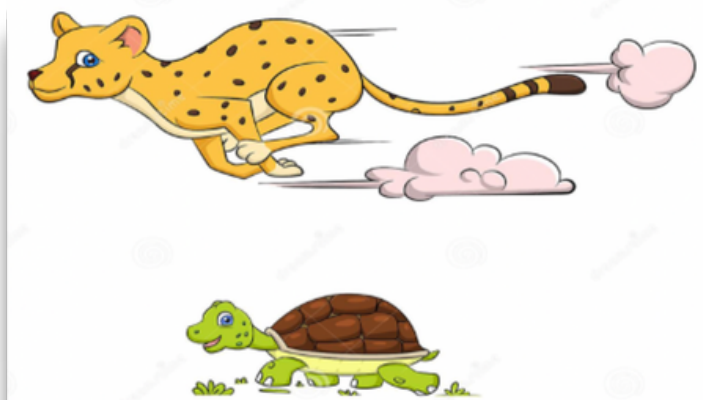
A way of writing down music so anyone can play it.



Timbre

Pronounced 'Tam-ber'

It's the quality of a musical note.
It's what makes a musical note sound different to another.



Tempo

The speed of the music.
Fast or slow, or in between.

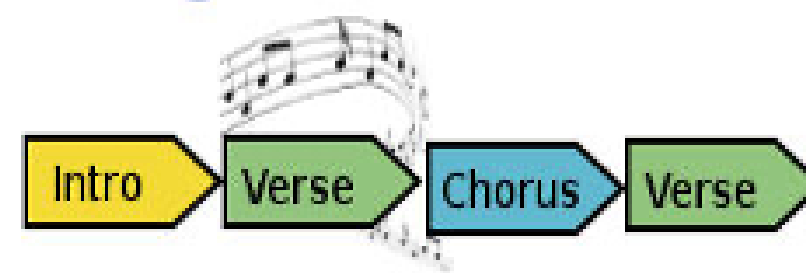


LOUD

QUIET

Dynamics

How loud or quiet the music is



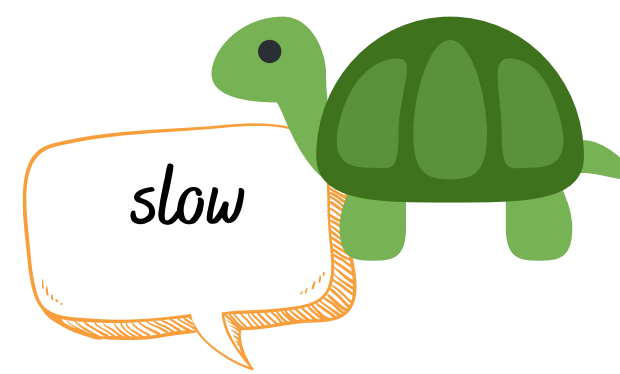
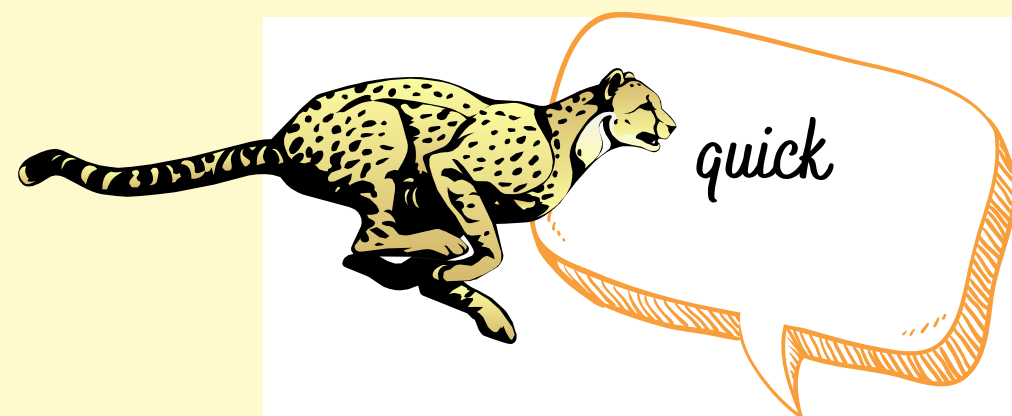
Structure

The way a song is set up.
e.g. an introduction, verse

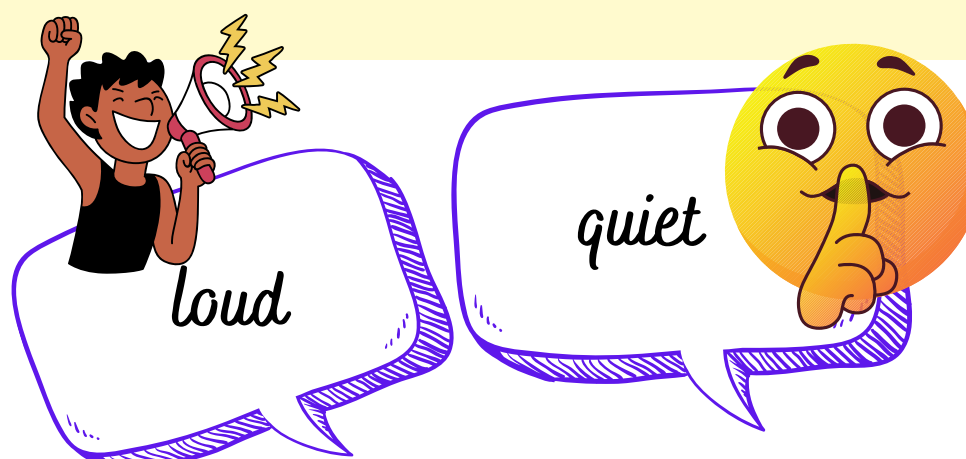


Texture

Layers of sound.
(They work together to make music interesting to listen to).



“ The tempo of the song was...” ”



“ The dynamics of the music were...” ”



“ The pitch is ...” ”

